

NOVELTIES 2014



Bals
ELEKTROTECHNIK

VARIABOX from Bals

- The advantages at a glance -

- Housing made of high-grade, impact-resistant plastic
- Top and bottom can be sealed together
- With external and internal fastening
- Modular expansion on all 4 sides
- Fuse elements arranged below transparent, lockable operating window with user-friendly OTC mechanism (one touch close)
- Bottom - black , top - electro-grey
- All CEE sockets with screwless, maintenance-free Quick-Connect technology
- Top straight and hinged at side
- The mounting dimension of the panel mounting socket outlets is not manufacturer-specific (standard dimension)



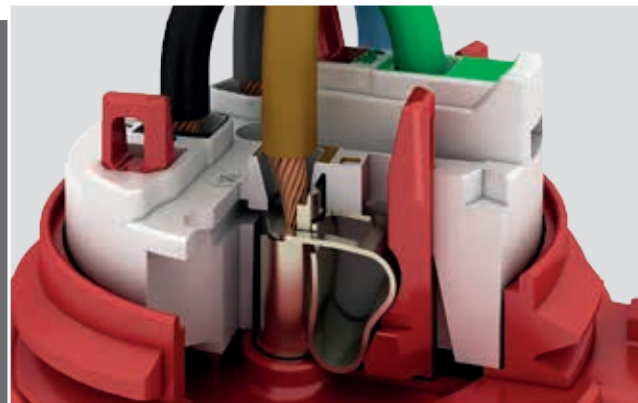
The operating window with the unique OTC mechanism (One Touch Close) engages in the open state and automatically closes and locks again when touched lightly



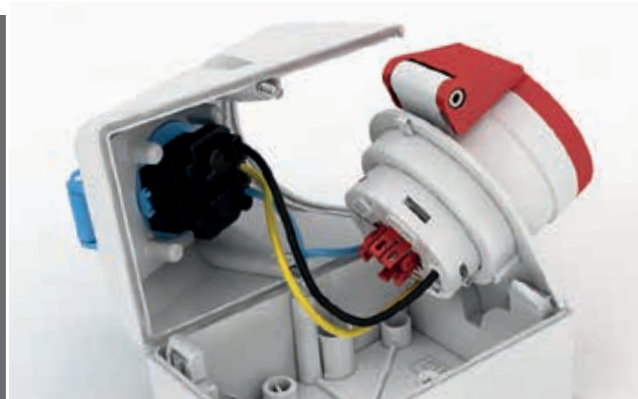
QUICK-CONNECT from Bals

- The advantages at a glance -

- QUICK-CONNECT is available from 16A 3-pole to 63A 5-pole.
- Screwless connection technology, time savings over other connection technologies of up to 70%
- Faster, more reliable and controlled conductor connection
- The terminal accepts all types of copper conductors
- Pressing the contact slide with a finger reliably and permanently closes the terminal
- The damage-free conductor clamping guarantees an optimum connection over the entire service life
- QUICK-CONNECT is maintenance-free, insensitive to shocks, vibrations and temperature fluctuations
- Colour-coded conductor entry for reliable installation



Maintenance-free, the new 32A QUICK-CONNECT technology in detail



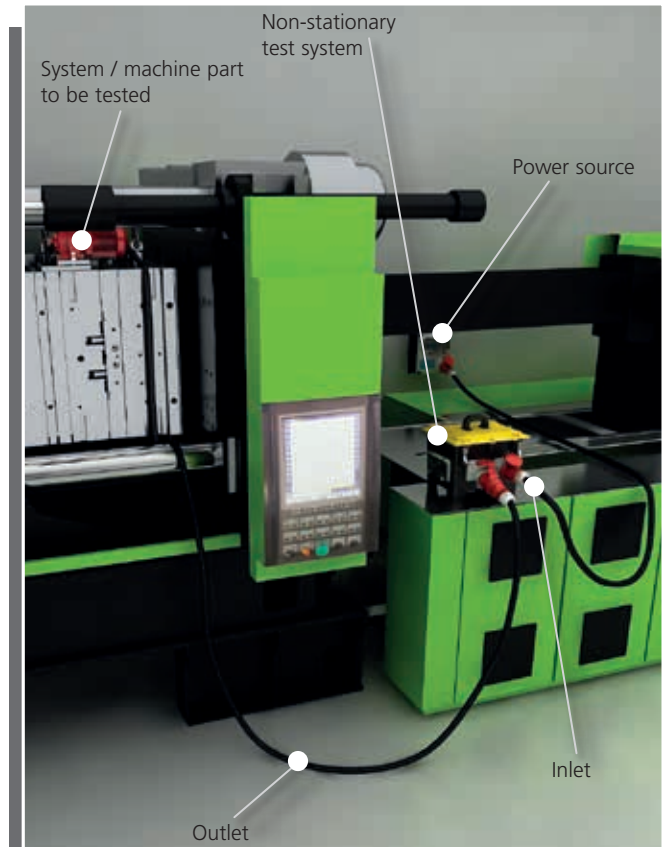
The TK combi socket with the QUICK-CONNECT double terminal





Power management from Bals - The advantages at a glance -

- Cost savings through fewer stationary measurement points
- Robust, solid-rubber housing for use in harsh environments (also in plastic housing available)
- Simple handling, since no software necessary (plug & play)
- The measurement is touch-safe, precise, simple and fast, even during running operation
- Flexible and targeted measurements in machine or system parts
- Readout of data not location-specific
- For machines and system parts with CEE-plug connection from 16A to 63A, converter-clamps with flexible connection cables available as an option
- Instantaneous detection of U, I, P, Q
- Data storage for measurement values for 39 days (minute values)
- Current measurement range to 3200 A




Non-stationary test system portable rubber housing



An important new regulation of the DIN EN 50191/ VDE 0104 takes effect for testing technicians.

According to this, non-stationary test systems that supply voltages which exceed the permissible contact voltage into electrical systems for test purposes must be equipped with an external safety device.

This also means, above all, a high legal risk for the test technician in the event of an accident involving personal injury related to an electrical test system. 

A non-stationary test system is a test system that is set up for a short time to perform tests on individual objects.

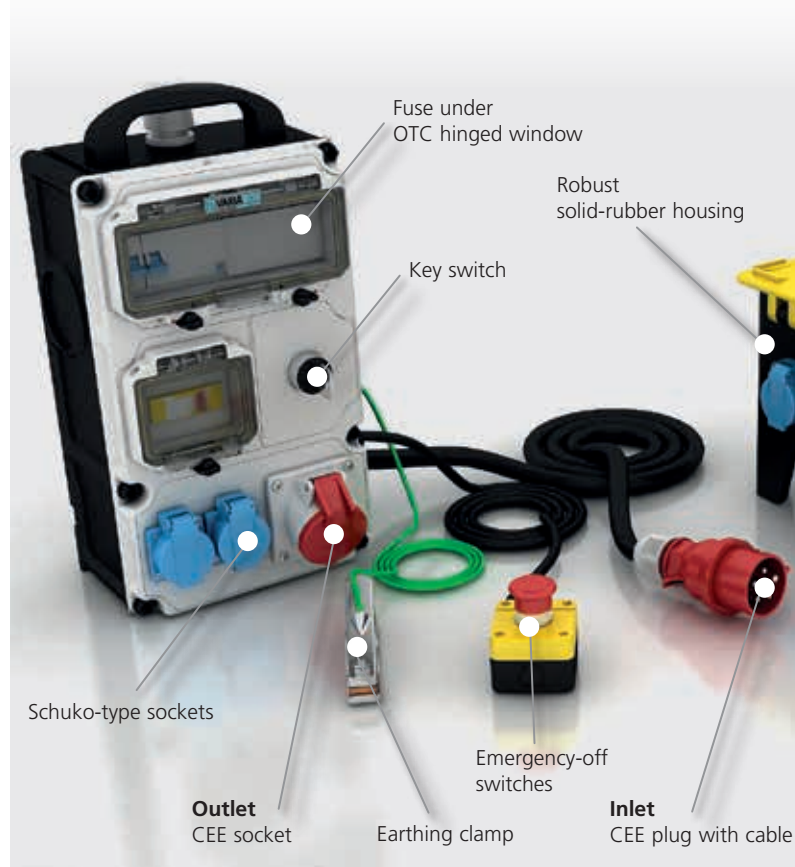
To ensure safety for man and machine, we recommend our non-stationary test systems, which are ideal for:

- Maintenance repairs
- Service work
- Erection of mobile / flexible test stations
- Endurance test of machine / system parts
- Test safety according to DIN EN 50191 / VDE 0104



Non-stationary test system - portable plastic housing

Portable plastic housing



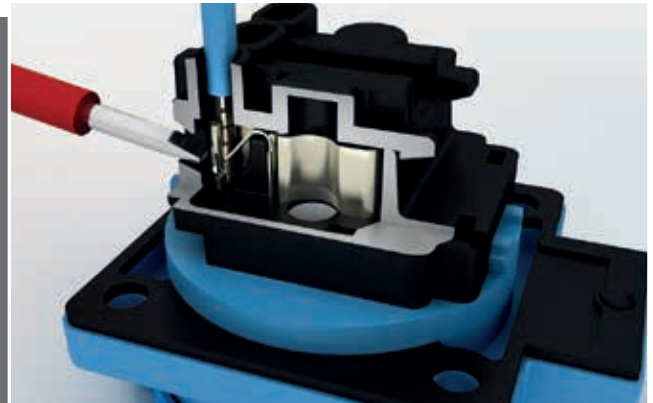
Portable solid-rubber housing



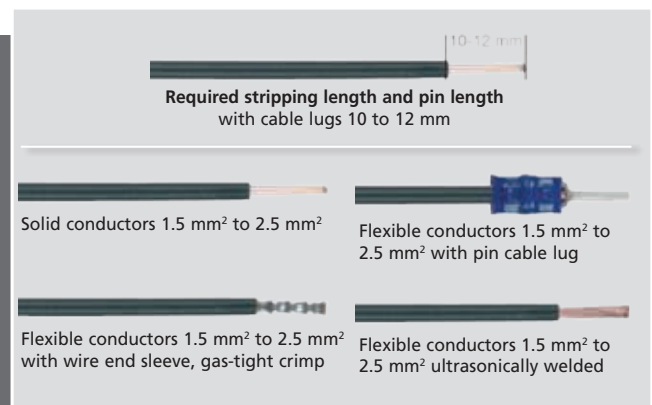
Screwless schuko-type socket from Bals

- The advantages at a glance -

- Screwless connection technology, VDE-tested
- Robust terminal and housing design
- New, attractive design with captive flange seal
- Also with child-proof safety feature on request for German and Belgian/French system
- Special contact technology mostly prevents deformation ultimately leading to lessening contact pressure and subsequent higher temperatures
- Available as IP44 or IP54 variant
- Versions available for German, Swiss, or Belgian/French system
- Finger-proof in accordance with BGV A3
- Flange dimensions in 50x50 mm and 75x75 mm



Simple disconnection of the conductor using a screwdriver

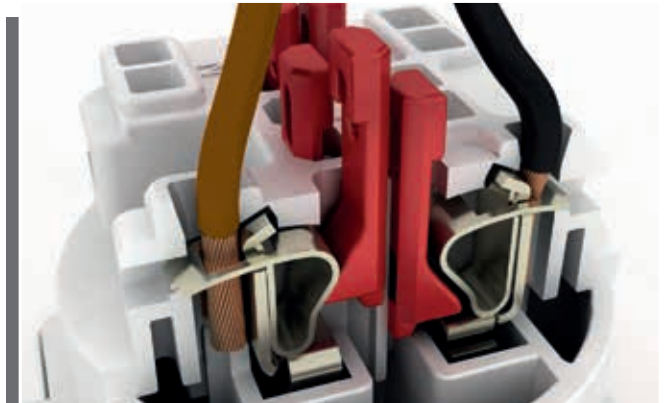


These conductor configurations can be used



Screwless Swiss standard socket from Bals - The advantages at a glance -

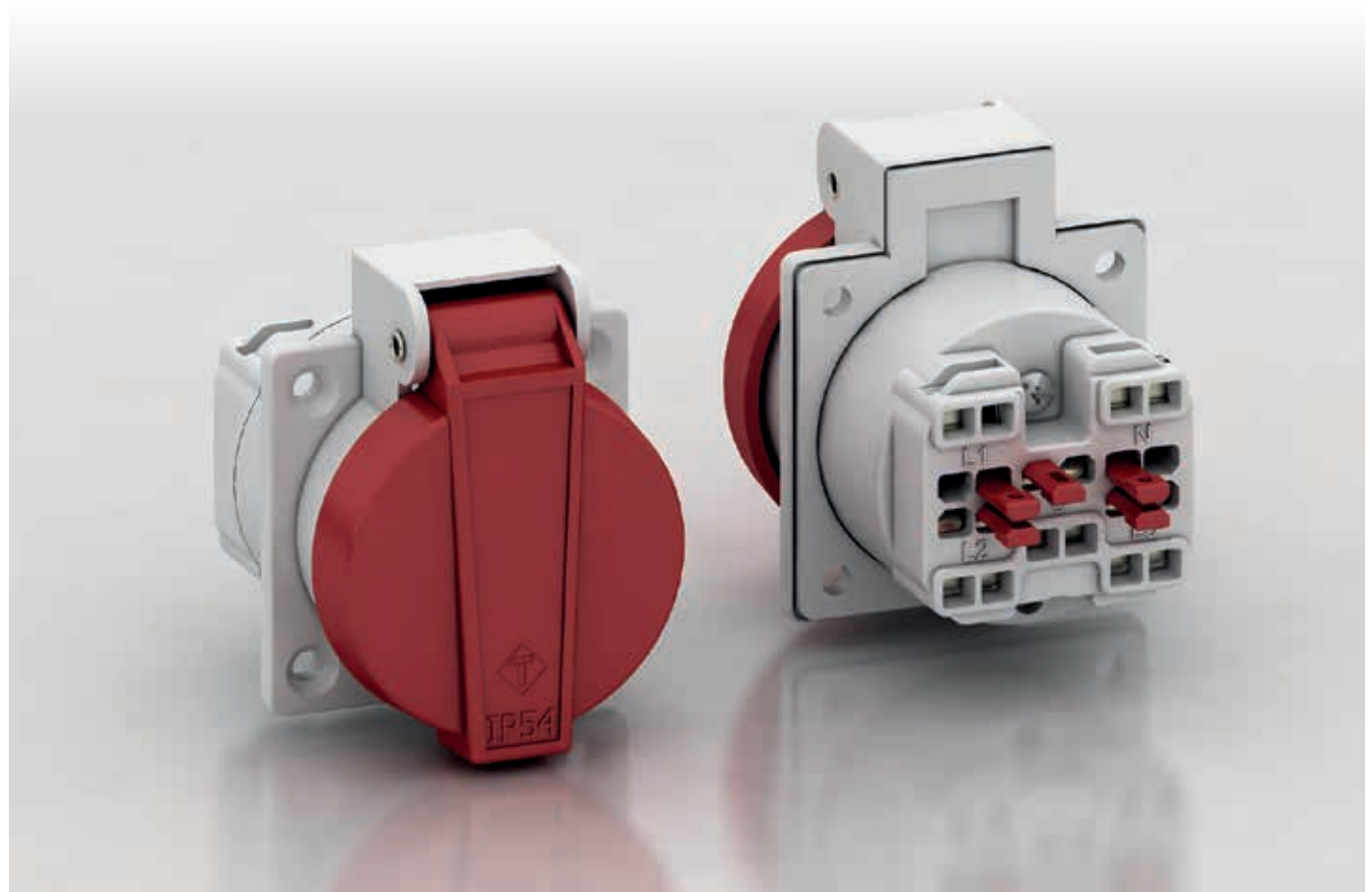
- Conform to SEV 1011
- Available as type 15 and 25
- Screwless quick connection technology, time savings over other connection methods of up to 70%
- Faster, more reliable and more controlled conductor connection
- The terminal accepts all types of copper conductors
- Pressing the contact slide with a finger reliably and permanently closes the terminal
- The damage-free conductor clamping guarantees an optimum connection over the entire service life
- QUICK-CONNECT is maintenance-free, insensitive to shocks, vibrations and temperature fluctuations

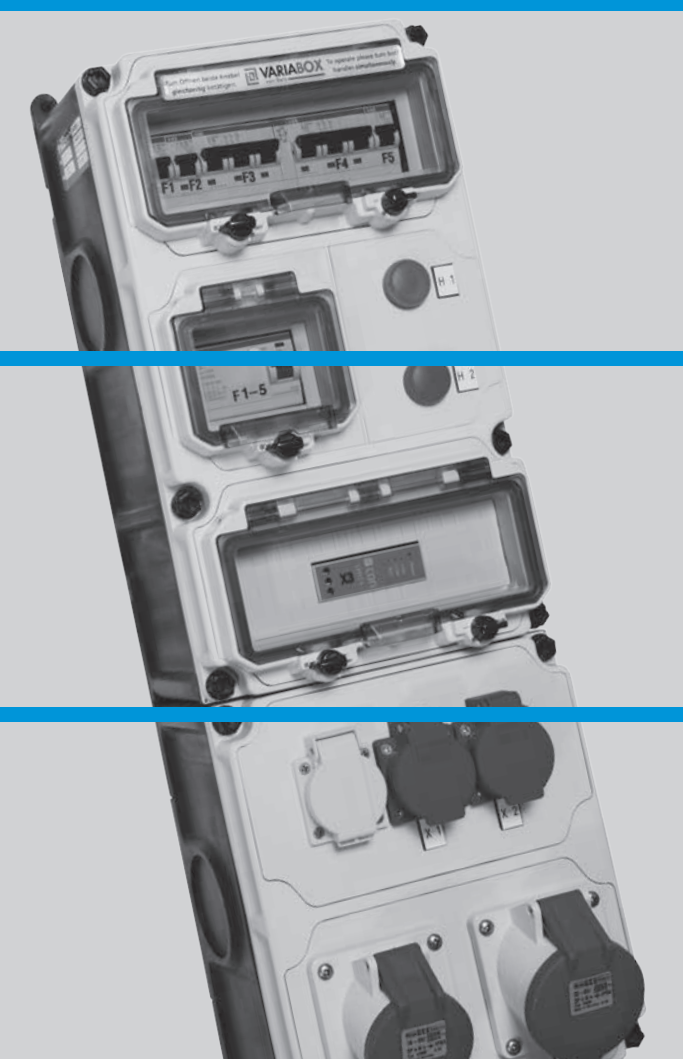


Contact 1 is actuated via the contact slide



Contact 2 is actuated by means of a screwdriver





Bals Elektrotechnik GmbH & Co. KG
D-57399 Kirchhundem-Albaum
Phone: +49 27 23/771-0 · Fax: +49 27 23/771-177/178
E-mail: info@bals.com · Internet: www.bals.com