

Schuko-type panel mounting socket outlets



QUICK  **CONNECT**[®]
VON BALS



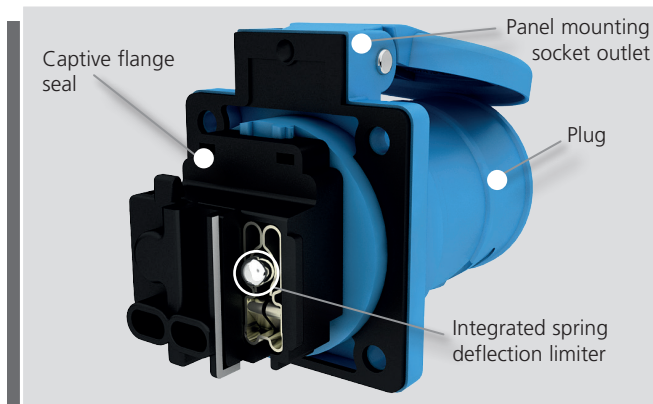
Bals
ELEKTROTECHNIK

Schuko-type panel mounting socket outlets with QUICK CONNECT[®] VON BALS

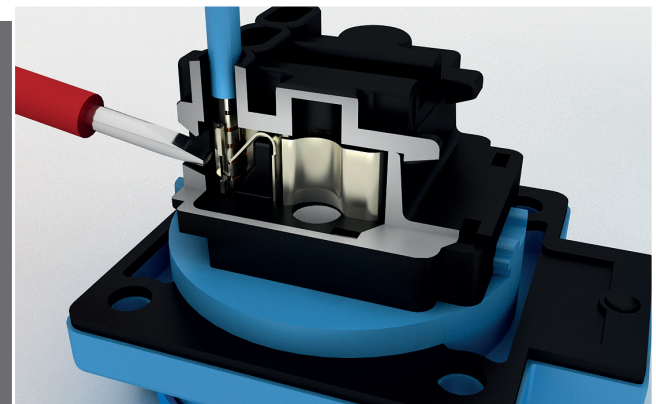
- Screwless connection technology
- Robust terminal and housing design
- New, attractive design
- Special contact technology mostly prevents deformation ultimately leading to lessening contact pressure and subsequent higher temperatures
- Captive flange seal
- Available as IP44 or IP54 variant (IP67 available from September 2014)
- Flange dimensions in 50x50 mm and 75x75 mm
- Versions available for German, Swiss, or Belgian/French system
- Also with child-proof safety feature on request
- Special colours on request (depending on quantity)
- VDE-tested
- Finger-proof in accordance with BGV A3
- Nickel plated contacts



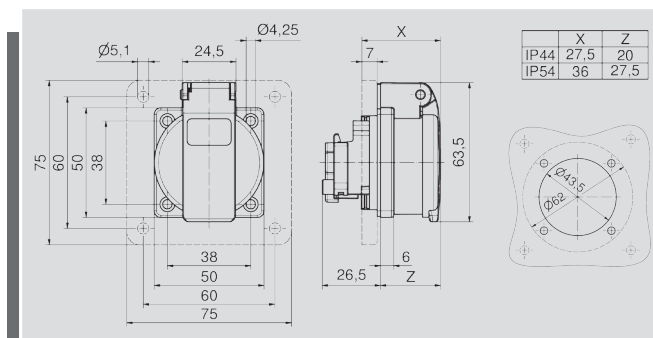
The QC version is available in different national standards and colours



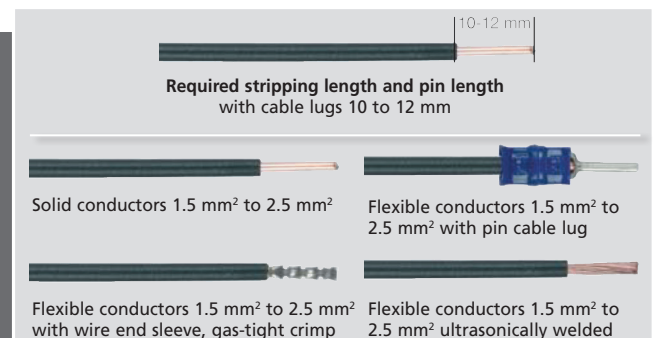
Solid design reduces contact deformation



Simple disconnection of the conductor using a screwdriver



Dimensional drawings



Different conductor types and cross sections can be used

| | | | |
|--|--|-----------|------|
| | Schuko-type panel mounting socket outlet IP 44 | | |
| | <ul style="list-style-type: none"> • Flange 50 x 50 mm • Screwless connection technology • With captive flange seal • Connection terminals in accordance with BGV A3 | | |
| | Colour | Order no. | Qty. |
| | blue | 71099* | 20 |
| | Schuko-type panel mounting socket outlet IP 54 | | |
| | <ul style="list-style-type: none"> • Flange 50 x 50 mm • Screwless connection technology • With captive flange seal • Connection terminals in accordance with BGV A3 • For mobile use | | |
| | Colour | Order no. | Qty. |
| | blue | 71102* | 20 |

* With child-proof socket outlets, please add -KI to the end of the order number

| | | | |
|--|--|-----------|------|
| | Schuko-type panel mounting socket outlet IP 44 | | |
| | <ul style="list-style-type: none"> • Flange 75 x 75 mm • Screwless connection technology • With captive flange seal • Connection terminals in accordance with BGV A3 | | |
| | Colour | Order no. | Qty. |
| | blue | 71108* | 20 |
| | Schuko-type panel mounting socket outlet IP 54 | | |
| | <ul style="list-style-type: none"> • Flange 75 x 75 mm • Screwless connection technology • With captive flange seal • Connection terminals in accordance with BGV A3 • For mobile use | | |
| | Colour | Order no. | Qty. |
| | blue | 71114* | 20 |



Bals
ELEKTROTECHNIK

Bals Elektrotechnik GmbH & Co. KG
D-57399 Kirchhundem-Albaum
Phone: +49 27 23/771-0
Fax: +49 27 23/771-177/178

E-mail: info@bals.com

www.bals.com