

phase inverter, as flanged appliance inlet - flange 75x75,
fixing centers 60x60



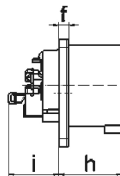
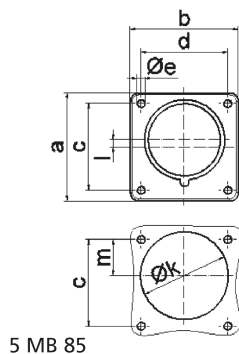
| Product description | |
|-------------------------------|--|
| BALS-Prd.-Nr | 2857 |
| EAN | 4024941028578 |
| product category (PG) | TE phase inverter as flanged appliance inlet |
| current (A) | 32A |
| number of poles (P99) | 5p |
| number of poles (P) | 3p+N+PE |
| position of earth contact (H) | 6 h |
| voltage (V) | 200/346 up to 240/415V |

| Product description | |
|--------------------------------|--|
| frequency (HZ) | 50 and 60Hz |
| protection degree (SA) | IP44 |
| colour code 1 (KF1) | red RAL 3000 |
| Colour of appliance | Enclosure red |
| connection design (AT) | screw terminal |
| maximum conductor size (LQ) | 6,0 qmm |
| cable entry (KE) | null |
| Flange size vertical | 75mm |
| Flange size horizontal | 75mm |
| Drill hole distance vertical | 60mm |
| Drill hole distance horizontal | 60mm |
| material of enclosure (GM) | Polyamide |
| contact | The contact carrier is made of high temperature resistant material, the contacts are brass nickel plated |

| Additional technical information | |
|----------------------------------|---|
| | A retaining device to match the hinged cover of the connector must be provided to ensure the latching feature |
| | Collar in middle of flange |

| Logistics data | |
|----------------|------------------|
| Weight/pcs | 0.193 kg / Piece |

| Logistics data | |
|----------------|---------------|
| Packaging | Bag |
| Content amount | 1 ST |
| EAN | 4024941028578 |
| Length | 410 mm |
| Width | 285 mm |
| Weight | 0.194 kg |
| Packaging | Carton |
| Content amount | 10 ST |
| EAN | 4024941967747 |
| Length | 245 mm |
| Width | 177 mm |
| Height | 185 mm |
| Weight | 2.063 kg |
| Volume | 7,140 ccm |



| Ampere Polzahl | 16 3 | 16 4 | 16 5 | 32 3 | 32 4 | 32 5 |
|----------------------------|---------|---------|---------|---------|---------|---------|
| a | 75,0 | 75,0 | 75,0 | 75,0 | 75,0 | 75,0 |
| b | 75,0 | 75,0 | 75,0 | 75,0 | 75,0 | 75,0 |
| c | 60,0 | 60,0 | 60,0 | 60,0 | 60,0 | 60,0 |
| d | 60,0 | 60,0 | 60,0 | 60,0 | 60,0 | 60,0 |
| e ø | 5,5 | 5,5 | 5,5 | 5,5 | 5,5 | 5,5 |
| f | 7,0 | 7,0 | 7,0 | 7,0 | 7,0 | 7,0 |
| h | 43,0 | 43,0 | 43,0 | 53,0 | 53,0 | 53,0 |
| i | 39,0 | 39,0 | 39,0 | 43,0 | 43,0 | 43,0 |
| k ø | 42,0 | 48,0 | 61,0 | 57,0 | 57,0 | 60,0 |
| l | - | - | 5,0 | 2,0 | 2,0 | - |
| m | 30,0 | 30,0 | 25,0 | 28,0 | 28,0 | 30,0 |
| Leiter mm ² min | 1 | 1 | 1 | 2,5 | 2,5 | 2,5 |
| Leiter mm ² max | 2,5 | 2,5 | 2,5 | 6 | 6 | 6 |