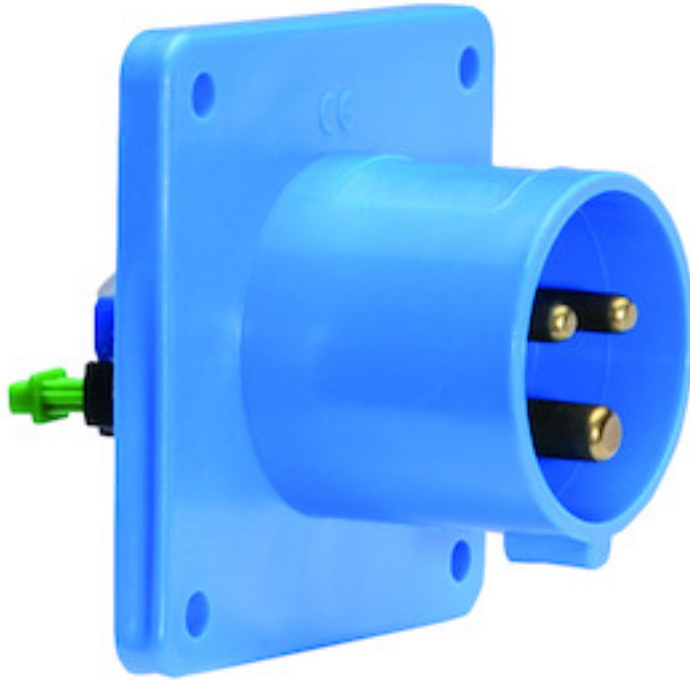


flanged appliance inlet - flange 75x75, fixing centers 60x60

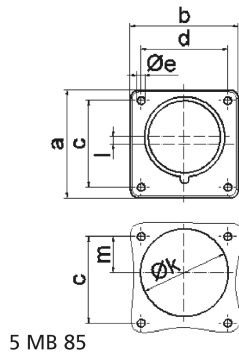


| Product description | |
|---------------------------|---|
| BALS-Prd.-Nr | 28010 |
| EAN | 4024941280105 |
| product group | flanged appliance inlet Quick-Connect, straight |
| current | 32A |
| number of poles | 3p |
| Arrangement of the phases | 2P+PE |
| position of earth contact | 6 h |
| voltage (V) | 200 up to 250V |

| Product description | |
|--------------------------------|--|
| frequency | 50 and 60Hz |
| protection degree | IP44 |
| colour code | blue RAL 5015 |
| Colour of appliance | Enclosure blue |
| connection design | screwless spring-clamp |
| maximum conductor size (LQ) | 6,0 qmm |
| cable entry (KE) | null |
| Height | 75mm |
| Width | 75mm |
| Depth | 96mm |
| Flange size vertical | 75mm |
| Flange size horizontal | 75mm |
| Drill hole distance vertical | 60mm |
| Drill hole distance horizontal | 60mm |
| material of enclosure | Polyamide |
| contact | The contact carrier is made of polyamide, The contacts are brass |

| Additional technical information | |
|----------------------------------|---|
| | A retaining device to match the hinged cover of the connector must be provided to ensure the latching feature |
| | Collar is brought out of center of the flange by 2 mm |

| Logistics data | |
|----------------|------------------|
| Weight/pcs | 0.142 kg / Piece |
| Packaging | Bag |
| Content amount | 1 ST |
| EAN | 4024941280105 |
| Length | 96 mm |
| Width | 75 mm |
| Height | 75 mm |
| Weight | 0.143 kg |
| Volume | 540 ccm |
| Packaging | Carton |
| Content amount | 10 ST |
| EAN | 4024941967563 |
| Length | 128 mm |
| Width | 225 mm |
| Height | 399 mm |
| Weight | 1.679 kg |
| Volume | 11,491.2 ccm |



| Ampere | 16 | 16 | 16 | 32 | 32 | 32 |
|----------------------------|------|------|------|------|------|------|
| Polzahl | 3 | 4 | 5 | 3 | 4 | 5 |
| a | 75,0 | 75,0 | 75,0 | 75,0 | 75,0 | 75,0 |
| b | 75,0 | 75,0 | 75,0 | 75,0 | 75,0 | 75,0 |
| c | 60,0 | 60,0 | 60,0 | 60,0 | 60,0 | 60,0 |
| d | 60,0 | 60,0 | 60,0 | 60,0 | 60,0 | 60,0 |
| e ø | 5,5 | 5,5 | 5,5 | 5,5 | 5,5 | 5,5 |
| f | 7,0 | 7,0 | 7,0 | 7,0 | 7,0 | 7,0 |
| h | 43,0 | 43,0 | 43,0 | 53,0 | 53,0 | 53,0 |
| i | 39,0 | 39,0 | 39,0 | 43,0 | 43,0 | 43,0 |
| k ø | 42,0 | 48,0 | 61,0 | 57,0 | 57,0 | 60,0 |
| l | - | - | 5,0 | 2,0 | 2,0 | - |
| m | 30,0 | 30,0 | 25,0 | 28,0 | 28,0 | 30,0 |
| Leiter mm ² min | 1 | 1 | 1 | 2,5 | 2,5 | 2,5 |
| Leiter mm ² max | 2,5 | 2,5 | 2,5 | 6 | 6 | 6 |