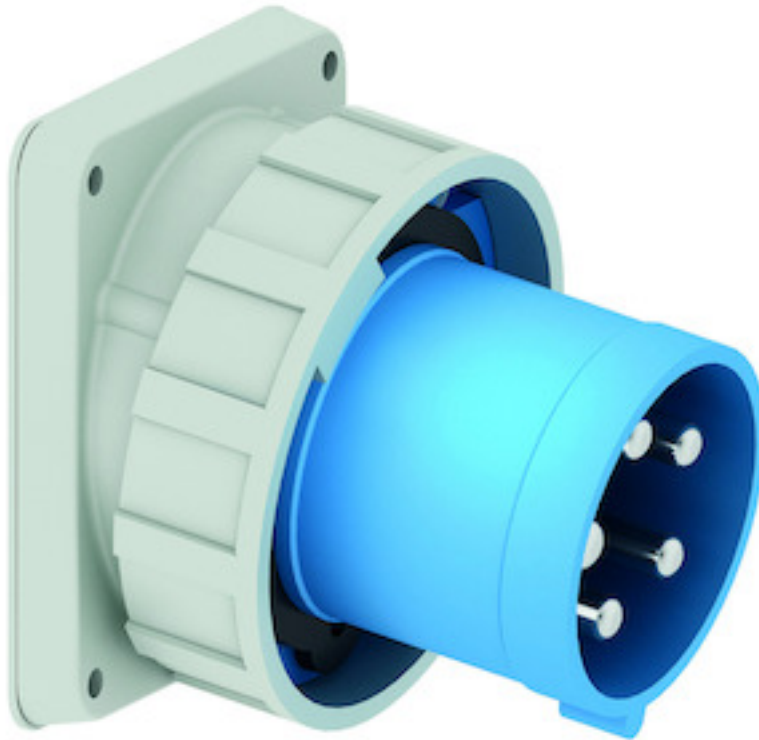


Panel mounting appliance inlet, angled - flange 130x120, fixing centers 108x100



| Product description | |
|-------------------------------|---|
| BALS-Prd.-Nr | 2743 |
| EAN | 4024941027434 |
| product category (PG) | TE panel mounting appliance inlet, angled |
| current (A) | 125A |
| number of poles (P99) | 5p |
| number of poles (P) | 3p+N+PE |
| position of earth contact (H) | 9 h |
| voltage (V) | 120/208 up to 144/250V |

| Product description | |
|--------------------------------|--|
| frequency (HZ) | 50 and 60Hz |
| protection degree (SA) | IP67 |
| colour code 1 (KF1) | blue RAL 5015 |
| Colour of appliance | Collar blue, Bayonet ring grey, Enclosure grey |
| connection design (AT) | screw terminal as box terminal |
| maximum conductor size (LQ) | 50.0 qmm |
| cable entry (KE) | null |
| Height | 125mm |
| Width | 136mm |
| Depth | 150mm |
| Flange size vertical | 130mm |
| Flange size horizontal | 120mm |
| Drill hole distance vertical | 108mm |
| Drill hole distance horizontal | 100mm |
| material of enclosure (GM) | Polyamide |
| contact | The contact carrier is made of high temperature resistant material, the contacts are brass nickel plated |

| Additional technical information | |
|----------------------------------|------------------------|
| | The inclination is 10° |

| Logistics data | |
|----------------|------------------|
| Weight/pcs | 1.135 kg / Piece |
| Packaging | Bag |
| Content amount | 1 ST |
| EAN | 4024941027434 |
| Length | 150 mm |
| Width | 136 mm |
| Height | 125 mm |
| Weight | 1.136 kg |
| Volume | 2,550 ccm |
| Packaging | Carton |
| Content amount | 5 ST |
| EAN | 4024941834025 |
| Length | 330 mm |
| Width | 216 mm |
| Height | 260 mm |
| Weight | 5.901 kg |
| Volume | 17,062.5 ccm |



5 MB 56

| Ampere Polzahl | 125 3 | 125 4 | 125 5 | | | |
|----------------------------|----------|----------|----------|--|--|--|
| a | 130,0 | 130,0 | 130,0 | | | |
| b | 120,0 | 120,0 | 120,0 | | | |
| c | 108,0 | 108,0 | 108,0 | | | |
| d | 100,0 | 100,0 | 100,0 | | | |
| e ø | 6,5 | 6,5 | 6,5 | | | |
| f | 13,0 | 13,0 | 13,0 | | | |
| h | 130,0 | 130,0 | 130,0 | | | |
| i | 135,0 | 135,0 | 135,0 | | | |
| k | 126,0 | 126,0 | 126,0 | | | |
| l | 23,0 | 23,0 | 23,0 | | | |
| m ø | 105,0 | 105,0 | 105,0 | | | |
| Leiter mm ² min | 16 | 16 | 16 | | | |
| Leiter mm ² max | 50 | 50 | 50 | | | |