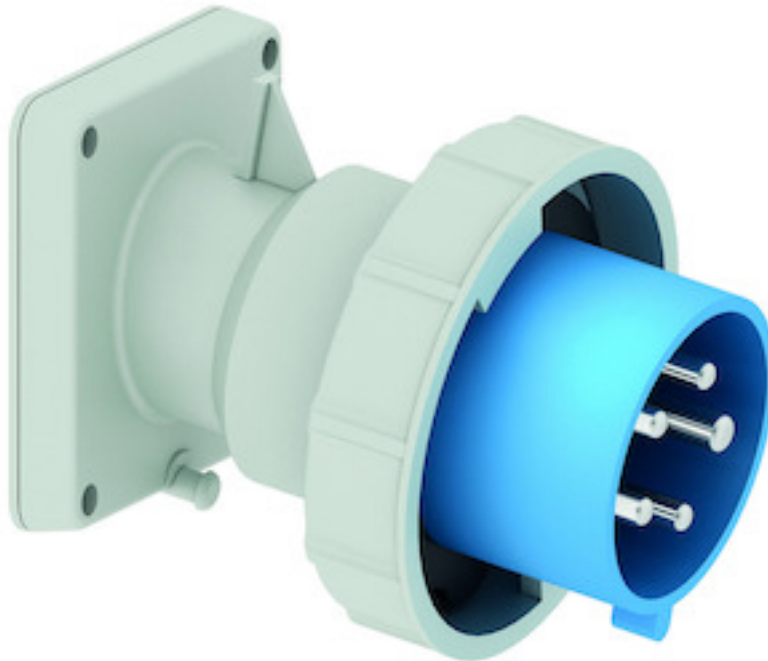


Panel mounting appliance inlet, angled - flange 85x85, fixing centers 70x70

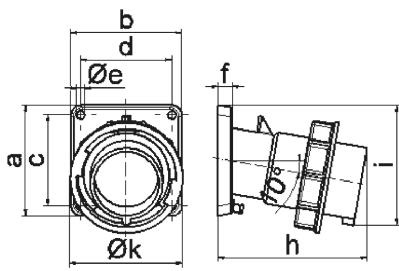


| Product description | |
|---------------------------|---|
| BALS-Prd.-Nr | 27245 |
| EAN | 4024941272452 |
| product group | TE panel mounting appliance inlet Quick-Connect, angled |
| current | 32A |
| number of poles | 5p |
| Arrangement of the phases | 3p+N+PE |
| position of earth contact | 9 h |
| voltage (V) | 120/208 up to 144/250V |

| Product description | |
|--------------------------------|--|
| frequency | 50 and 60Hz |
| protection degree | IP67 |
| colour code | blue RAL 5015 |
| Colour of appliance | Collar blue, Bayonet ring grey, Enclosure grey |
| connection design | screwless spring-clamp |
| maximum conductor size (LQ) | 6,0 qmm |
| cable entry (KE) | null |
| Height | 103mm |
| Width | 94mm |
| Depth | 120mm |
| Flange size vertical | 85mm |
| Flange size horizontal | 85mm |
| Drill hole distance vertical | 70mm |
| Drill hole distance horizontal | 70mm |
| material of enclosure | Polyamide |
| contact | The contact carrier is made of high temperature resistant material, the contacts are brass nickel plated |

| Additional technical information | |
|----------------------------------|------------------------|
| | The inclination is 10° |

| Logistics data | |
|----------------|----------------|
| Weight/pcs | 0.0 kg / Piece |
| Packaging | Bag |
| Content amount | 1 ST |
| EAN | 4024941272452 |
| Length | 120 mm |
| Width | 94 mm |
| Height | 103 mm |
| Weight | 0.001 kg |
| Volume | 1,161.84 ccm |
| Packaging | Carton |
| Content amount | 10 ST |
| EAN | 4024941833882 |
| Length | 325 mm |
| Width | 217 mm |
| Height | 210 mm |
| Weight | 0.206 kg |
| Volume | 13,588.4 ccm |



5 MB 22

| Ampere | 16 | 16 | 16 | 32 | 32 | 32 |
|----------------------------|-------|-------|-------|-------|-------|-------|
| Polzahl | 3 | 4 | 5 | 3 | 4 | 5 |
| a | 85,0 | 85,0 | 85,0 | 85,0 | 85,0 | 85,0 |
| b | 85,0 | 85,0 | 85,0 | 85,0 | 85,0 | 85,0 |
| c | 70,0 | 70,0 | 70,0 | 70,0 | 70,0 | 70,0 |
| d | 70,0 | 70,0 | 70,0 | 70,0 | 70,0 | 70,0 |
| e Ø | 6,3 | 6,3 | 6,3 | 6,3 | 6,3 | 6,3 |
| f | 11,0 | 11,0 | 11,0 | 11,0 | 11,0 | 11,0 |
| h | 104,0 | 110,0 | 116,0 | 121,0 | 121,0 | 127,0 |
| i | 83,0 | 90,0 | 92,0 | 96,0 | 96,0 | 100,0 |
| k | 70,5 | 79,5 | 86,5 | 95,0 | 95,0 | 101,5 |
| Leiter mm ² min | 1 | 1 | 1 | 2,5 | 2,5 | 2,5 |
| Leiter mm ² max | 2,5 | 2,5 | 2,5 | 6 | 6 | 6 |
| | | | | | | |
| | | | | | | |