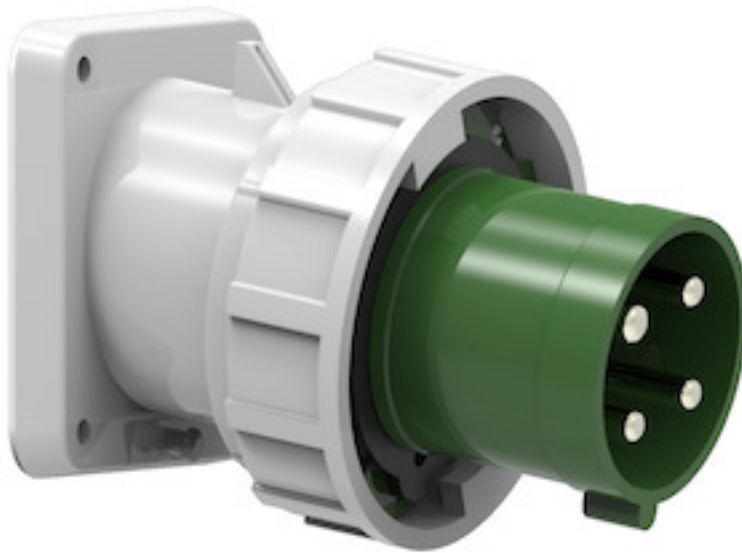


Panel mounting appliance inlet, angled - flange 107x100 fixing centers 85x77

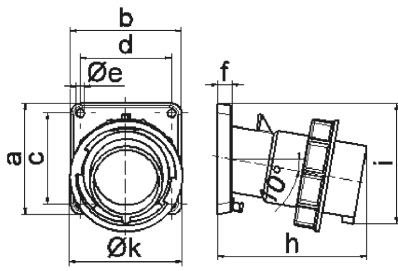


Product description	
BALS-Prd.-Nr	27014
EAN	4024941270144
Product category	TE panel mounting appliance inlet, angled
Current	63A
Number of poles	4p
Number of poles	3P+PE
Position of earth contact	2 h
Voltage	> 50V

Product description	
Frequency	over 300 up to 500Hz
Protection degree	IP67
Colour code	green RAL 6002
Colour of appliance	Bayonet ring grey RAL 7035, Enclosure grey RAL 7035, Collar green RAL 6002
Connection design	box terminal
Maximum conductor size	16,0 qmm
Cable entry	null
Height	131mm
Width	113.5mm
Depth	153mm
Flange size vertical	107mm
Flange size horizontal	100mm
Drill hole distance vertical	85mm
Drill hole distance horizontal	77mm
Material of enclosure	Polyamide
Contact	The contact carrier is made of high temperature resistant material, the contacts are brass nickel plated

Additional technical information	
	The inclination is 10°

Logistics data	
Weight/pcs	0.685 kg / Piece
Packaging	Bag
Content amount	1 ST
EAN	4024941270144
Length	153 mm
Width	113.5 mm
Height	131 mm
Weight	0.686 kg
Volume	2,274.881 ccm
Packaging	Carton
Content amount	5 ST
EAN	4024941787918
Length	325 mm
Width	217 mm
Height	210 mm
Weight	3.631 kg
Volume	13,588.4 ccm



Ampere	63	63	63			
Polzahl	3	4	5			
a	107,0	107,0	107,0			
b	100,0	100,0	100,0			
c	85,0	85,0	85,0			
d	77,0	77,0	77,0			
e \varnothing	6,5	6,5	6,5			
f	12,0	12,0	12,0			
h	155,0	155,0	155,0			
i	118,0	118,0	118,0			
k	113,5	113,5	113,5			
Leiter mm ² min	6	6	6			
Leiter mm ² max	16	16	16			

5 MB 22