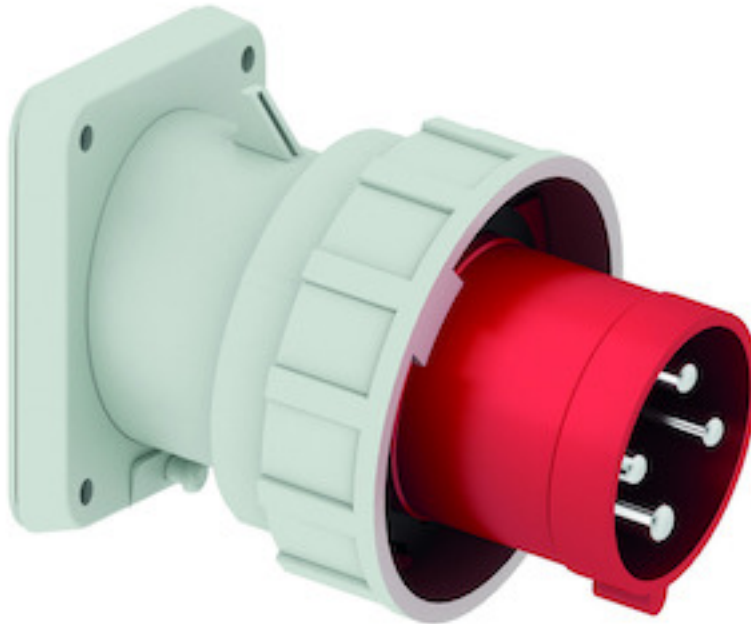


Panel mounting appliance inlet, angled - flange 107x100 fixing centers 85x77



Product description	
BALS-Prd.-Nr	27011
EAN	4024941270113
product category (PG)	TE panel mounting appliance inlet, angled
current (A)	63A
number of poles (P99)	4p
number of poles (P)	3P+PE
position of earth contact (H)	6 h
voltage (V)	380 up to 415V

Product description	
frequency (HZ)	50 and 60Hz
protection degree (SA)	IP67
colour code 1 (KF1)	red RAL 3000
Colour of appliance	Collar red, Bayonet ring grey, Enclosure grey
connection design (AT)	screw terminal as box terminal
maximum conductor size (LQ)	16,0 qmm
cable entry (KE)	null
Height	125mm
Width	113.5mm
Depth	153mm
Flange size vertical	107mm
Flange size horizontal	100mm
Drill hole distance vertical	85mm
Drill hole distance horizontal	77mm
material of enclosure (GM)	Polyamide
contact	The contact carrier is made of high temperature resistant material, the contacts are brass nickel plated

Additional technical information	
	The inclination is 10°

Logistics data	
Weight/pcs	0.64 kg / Piece
Packaging	Bag
Content amount	1 ST
EAN	4024941270113
Length	153 mm
Width	113.5 mm
Height	125 mm
Weight	0.641 kg
Volume	2,170.68 ccm
Packaging	Carton
Content amount	5 ST
EAN	4024941958967
Length	325 mm
Width	217 mm
Height	210 mm
Weight	3.406 kg
Volume	13,588.4 ccm



5 MB 22

Ampere	63	63	63			
Polzahl	3	4	5			
a	107,0	107,0	107,0			
b	100,0	100,0	100,0			
c	85,0	85,0	85,0			
d	77,0	77,0	77,0			
e ø	6,5	6,5	6,5			
f	12,0	12,0	12,0			
h	155,0	155,0	155,0			
i	118,0	118,0	118,0			
k	113,5	113,5	113,5			
Leiter mm ² min	6	6	6			
Leiter mm ² max	16	16	16			