

panel mounting appliance inlet - 7 poles without hinged cover

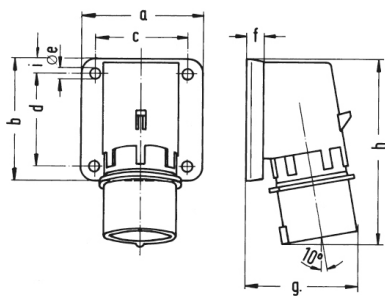


Product description	
BALS-Prd.-Nr	26013
EAN	4024941260138
Product category	TE surface mounting appliance inlet
Current	16A
Number of poles	7p
Number of poles	6p+PE
Position of earth contact	6 h
Voltage	400V

Product description	
Frequency	50 and 60Hz
Protection degree	IP44
Colour code	red RAL 3000
Colour of appliance	Collar red RAL 3000, Enclosure grey RAL 7035
Connection design	with screw terminal
Maximum conductor size	2,5 qmm
Cable entry	null
Height	129mm
Width	84mm
Depth	78mm
Flange size vertical	84mm
Flange size horizontal	84mm
Drill hole distance vertical	64mm
Drill hole distance horizontal	64mm
Material of enclosure	Polyamide
Contact	The contact carrier is made of high temperature resistant material, the contacts are brass nickel plated

Logistics data	
Weight/pcs	0.217 kg / Piece
Packaging	Bag
Content amount	1 ST

Logistics data	
EAN	4024941260138
Length	78 mm
Width	84 mm
Height	129 mm
Weight	0.218 kg
Volume	845.208 ccm
Packaging	Carton
Content amount	10 ST
EAN	4024941963541
Length	258 mm
Width	183 mm
Height	212 mm
Weight	2.322 kg
Volume	8,750 ccm



5 MB 184

Ampere	16	32					
Polzahl	7	7					
a	84,0	90,0					
b	84,0	75,0					
c	64,0	78,0					
d	64,0	45,0					
e ø	5,5	5,5					
f	7,0	7,0					
g	78,0	88,0					
h	129,0	140,0					
i	-	13,0					
Leiter mm ² min	1	2,5					
Leiter mm ² max	2,5	6					