

wall mounting appliance inlet - housing dimensions 100x75



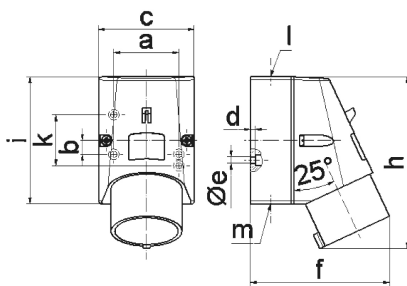
Product description	
BALS-Prd.-Nr	249
EAN	4024941002493
product category (PG)	GT wall mounting appliance inlet
current (A)	16A
number of poles (P99)	4p
number of poles (P)	3P+PE
position of earth contact (H)	6 h
voltage (V)	380 up to 415V

Product description	
frequency (HZ)	50 and 60Hz
protection degree (SA)	IP44
colour code 1 (KF1)	red RAL 3000
Colour of appliance	Housing top red, Housing bottom grey
connection design (AT)	screw terminal
maximum conductor size (LQ)	2,5 qmm
cable entry (KE)	top entry M20
Height	135mm
Width	75mm
Depth	106mm
dimension of enclosure (GG)	100x75 mm (HxW)
material of enclosure (GM)	Polyamide
contact	The contact carrier is made of polyamide, The contacts are brass

Additional technical information	
	The cable entry is one at top open and one at bottom and one rear side closed

Logistics data	
Weight/pcs	0.225 kg / Piece
Packaging	Bag
Content amount	1 ST

Logistics data	
EAN	4024941002493
Length	106 mm
Width	75 mm
Height	135 mm
Weight	0.226 kg
Volume	1,073.25 ccm
Packaging	Carton
Content amount	10 ST
EAN	4024941967594
Length	387 mm
Width	222 mm
Height	150 mm
Weight	2.443 kg
Volume	11,029.5 ccm



Ampere Polzahl	16 3	16 4	16 5
a	51,0	59,0	59,0
b	-	11,0	11,0
c	64,0	75,0	75,0
d	4,0	4,0	4,0
e ø	4,1	5,1	5,1
f	93,0	106,0	110,0
h	122,0	135,0	135,0
i	87,0	100,0	100,0
k	40,0	-	-
l	M20	M20	M20
m	für M20	für M20	für M20
Leiter mm ² min	1	1	1
Leiter mm ² max	2,5	2,5	2,5