

wall mounting appliance inlet - housing dimensions 126x83



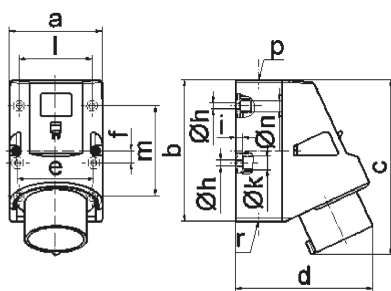
Product description	
BALS-Prd.-Nr	24627
EAN	4024941947572
Product category	TE wall mounting appliance inlet Quick-Connect
Current	32A
Number of poles	5p
Number of poles	3p+N+PE
Position of earth contact	1 h
Voltage	>50V for all other

Product description	
Protection degree	IP44
Colour code	gray RAL 7035
Colour of appliance	Housing bottom grey RAL 7035, Housing top grey RAL 7035, Collar grey RAL 7035
Connection design	screwless spring-clamp
Maximum conductor size	6,0 qmm
Cable entry	1xM25 top, 2xM25 bottom
Height	166mm
Width	83mm
Depth	130mm
dimension of enclosure (GG)	126x83 mm (HxW)
Material of enclosure	Polyamide
Contact	The contact carrier is made of high temperature resistant material, the contacts are brass nickel plated

Additional technical information	
	The cable entry is one at top open and two at bottom closed
	Lower part of housing rotatable by 180°
	4 cut out fixing holes in the lower part of housing

Logistics data	
Weight/pcs	0.362 kg / Piece

Logistics data	
Packaging	Bag
Content amount	1 ST
EAN	4024941947572
Length	130 mm
Width	83 mm
Height	166 mm
Weight	0.363 kg
Volume	1,791.14 ccm
Packaging	Carton
Content amount	10 ST
EAN	4024941836319
Length	330 mm
Width	216 mm
Height	260 mm
Weight	3.846 kg
Volume	17,062.5 ccm



5 MB 45

Ampere	16	32	32	32
Polzahl	5	3	4	5
a	83,0	83,0	83,0	83,0
b	126,0	126,0	126,0	126,0
c	155,5	165,0	165,0	166,0
d	122,0	128,0	128,0	130,0
e	68,0	68,0	68,0	68,0
f	11,0	11,0	11,0	11,0
h ø	5,5	5,5	5,5	5,5
i	6,5	6,5	6,5	6,5
k ø	12,0	12,0	12,0	12,0
l	65,0	65,0	65,0	65,0
m	80,0	80,0	80,0	80,0
n ø	10	10,0	10,0	10,0
p	M25	M25	M25	M25
r	2xM25	2xM25	2xM25	2xM25
Leiter mm ² min	1	2,5	2,5	2,5
Leiter mm ² max	2,5	6	6	6