

wall mounting appliance inlet - housing dimensions 126x83



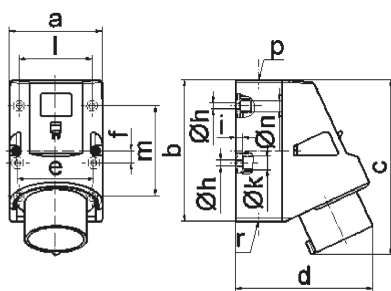
Product description	
BALS-Prd.-Nr	24413
EAN	4024941244138
product group	TE wall mounting appliance inlet Quick-Connect
current	32A
number of poles	5p
Arrangement of the phases	3p+N+PE
position of earth contact	6 h
voltage (V)	200/346 up to 240/415V

Product description	
frequency	50 and 60Hz
protection degree	IP44
colour code	red RAL 3000
Colour of appliance	Collar red, Housing bottom grey, Housing top grey
connection design	screwless spring-clamp
maximum conductor size (LQ)	6,0 qmm
cable entry (KE)	1xM25 top, 2xM25 bottom
Height	166mm
Width	83mm
Depth	130mm
dimension of enclosure (GG)	126x83 mm (HxW)
material of enclosure	Polyamide
contact	The contact carrier is made of high temperature resistant material, the contacts are brass nickel plated

Additional technical information	
	The cable entry is one at top open and two at bottom closed
	Lower part of housing rotatable by 180°
	4 cut out fixing holes in the lower part of housing

Logistics data	
Weight/pcs	0.364 kg / Piece

Logistics data	
Packaging	Bag
Content amount	1 ST
EAN	4024941244138
Length	130 mm
Width	83 mm
Height	166 mm
Weight	0.365 kg
Volume	1,791.14 ccm
Packaging	Carton
Content amount	10 ST
EAN	4024941966320
Length	330 mm
Width	216 mm
Height	260 mm
Weight	3.866 kg
Volume	17,062.5 ccm



5 MB 45

Ampere	16	32	32	32
Polzahl	5	3	4	5
a	83,0	83,0	83,0	83,0
b	126,0	126,0	126,0	126,0
c	155,5	165,0	165,0	166,0
d	122,0	128,0	128,0	130,0
e	68,0	68,0	68,0	68,0
f	11,0	11,0	11,0	11,0
h ø	5,5	5,5	5,5	5,5
i	6,5	6,5	6,5	6,5
k ø	12,0	12,0	12,0	12,0
l	65,0	65,0	65,0	65,0
m	80,0	80,0	80,0	80,0
n ø	10	10,0	10,0	10,0
p	M25	M25	M25	M25
r	2xM25	2xM25	2xM25	2xM25
Leiter mm ² min	1	2,5	2,5	2,5
Leiter mm ² max	2,5	6	6	6