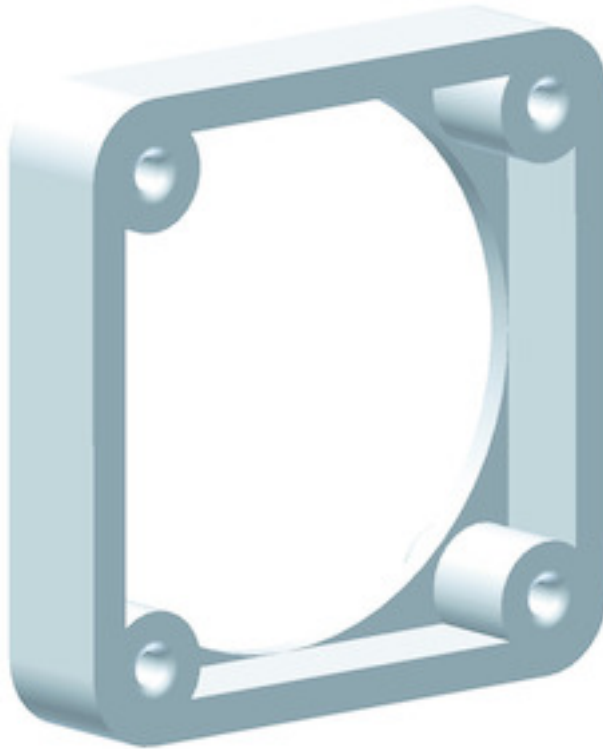


## Accessories sockets - 44x44



| Product description            |                |
|--------------------------------|----------------|
| BALS-Prd.-Nr                   | 1847           |
| EAN                            | 4024941018470  |
| Product category               | Mounting frame |
| Colour code                    | gray RAL 7035  |
| Height                         | 54mm           |
| Width                          | 54mm           |
| Depth                          | 10mm           |
| Drill hole distance vertical   | 44mm           |
| Drill hole distance horizontal | 44mm           |

| Product description   |           |
|-----------------------|-----------|
| Material of enclosure | Polyamide |

| Logistics data |                  |
|----------------|------------------|
| Weight/pcs     | 0.015 kg / Piece |
| Packaging      | Bag              |
| Content amount | 1 ST             |
| EAN            | 4024941018470    |
| Length         | 10 mm            |
| Width          | 54 mm            |
| Height         | 54 mm            |
| Weight         | 0.016 kg         |
| Volume         | 29.16 ccm        |
| Packaging      | Carton           |
| Content amount | 100 ST           |
| EAN            | 4024941326957    |
| Length         | 275 mm           |
| Width          | 175 mm           |
| Height         | 137 mm           |
| Weight         | 1.625 kg         |
| Volume         | 5,737.5 ccm      |



30 MB 182

| a  | b  | c  | d  | e  | Bestell-Nr. |
|----|----|----|----|----|-------------|
| 50 | 50 | 38 | 38 | 13 | 1843        |
| 54 | 54 | 44 | 44 | 10 | 1847        |
| 57 | 66 | 47 | 47 | 10 | 1848        |
| 60 | 60 | 50 | 50 | 10 | 1849        |
| 62 | 62 | 52 | 52 | 10 | 1850        |
| 62 | 70 | 52 | 60 | 10 | 1851        |