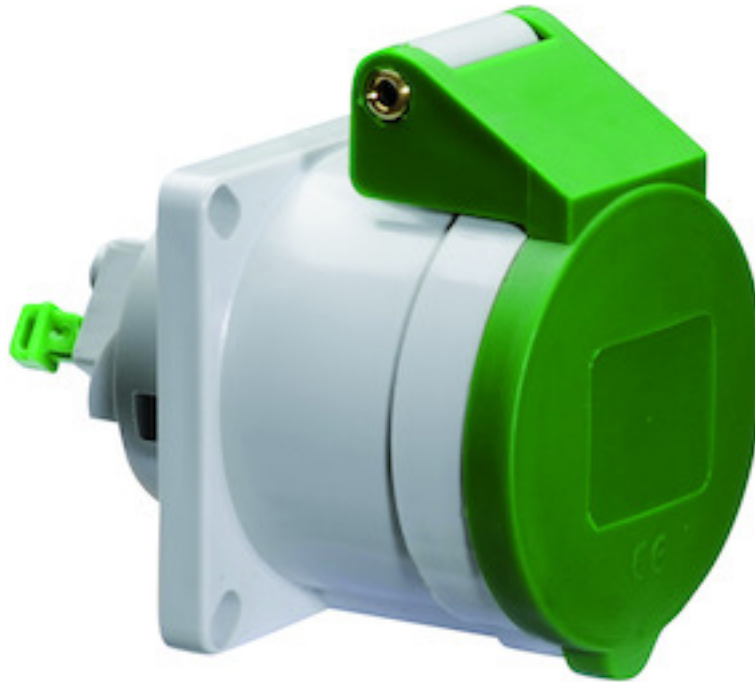


panel mounting socket outlet, straight - flange 60x60,  
fixing centers 50-52x50-52

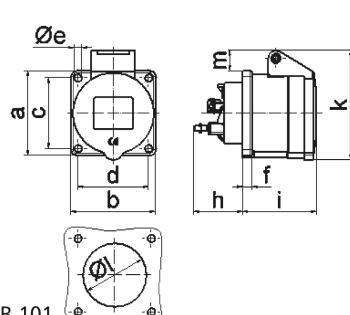


Product description	
BALS-Prd.-Nr	13666
EAN	4024941136662
Product category	Panel mounting socket outlet Quick-Connect, straight
Current	16A
Number of poles	4p
Number of poles	3P+PE
Position of earth contact	2 h
Voltage	> 50V

Product description	
Frequency	over 300 up to 500Hz
Protection degree	IP44
Colour code	green RAL 6002
Colour of appliance	Hinged lid green RAL 6002, Enclosure grey RAL 7035
Connection design	screwless sping/cage/kontex
Maximum conductor size	4,0 qmm
Cable entry	null
Height	78mm
Width	60mm
Depth	88mm
Flange size vertical	60mm
Flange size horizontal	60mm
Drill hole distance vertical	51mm
Drill hole distance horizontal	51mm
Material of enclosure	Polyamide
Contact	The contact carrier is made of polyamide, The contacts are brass

Logistics data	
Weight/pcs	0.12 kg / Piece
Packaging	Bag
Content amount	1 ST

Logistics data	
EAN	4024941136662
Length	88 mm
Width	60 mm
Height	78 mm
Weight	0.121 kg
Volume	411.84 ccm
Packaging	Carton
Content amount	10 ST
EAN	4024941828949
Length	275 mm
Width	175 mm
Height	137 mm
Weight	1.325 kg
Volume	5,737.5 ccm



4 MB 101

Ampere	16	16				
Polzahl	3	4				
a	56,0	60,0				
b	56,0	60,0				
c	44,0	50 - 52				
d	44,0	50 - 52				
e Ø	4,4	5,5				
f	7,0	7,0				
h	35,5	35,5				
i	51,0	53,0				
k	70,0	80,0				
l Ø	45,0	45,0				
m	13,0	9,0				
Leiter mm <sup>2</sup> min	1,5	1,5				
Leiter mm <sup>2</sup> max	4	4				