

panel mounting socket outlet, angled - flange 68x62,
fixing centers 47x47

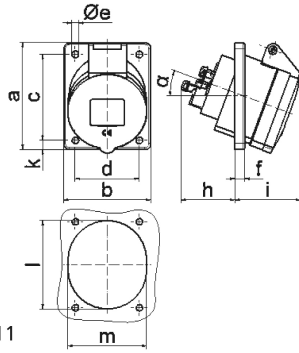


| Product description | |
|---------------------------|--|
| BALS-Prd.-Nr | 12731 |
| EAN | 4024941127318 |
| product group | Panel mounting socket outlet Quick-Connect, angled |
| current | 16A |
| number of poles | 3p |
| Arrangement of the phases | 2P+PE |
| position of earth contact | 4 h |
| voltage (V) | 100 up to 130V |

| Product description | |
|--------------------------------|--|
| frequency | 50 and 60Hz |
| protection degree | IP44 |
| colour code | yellow RAL 1012 |
| Colour of appliance | Hinged lid yellow, Enclosure grey |
| connection design | screwless sping/cage/kontex |
| maximum conductor size (LQ) | 4,0 qmm |
| cable entry (KE) | null |
| Height | 75mm |
| Width | 62mm |
| Depth | 90mm |
| Flange size vertical | 68mm |
| Flange size horizontal | 62mm |
| Drill hole distance vertical | 47mm |
| Drill hole distance horizontal | 47mm |
| material of enclosure | Polyamide |
| contact | The contact carrier is made of polyamide, The contacts are brass |

| Additional technical information | |
|----------------------------------|------------------------|
| | The inclination is 20° |

| Logistics data | |
|----------------|------------------|
| Weight/pcs | 0.095 kg / Piece |
| Packaging | Bag |
| Content amount | 1 ST |
| EAN | 4024941127318 |
| Length | 60 mm |
| Width | 62 mm |
| Height | 75 mm |
| Weight | 0.096 kg |
| Volume | 279 ccm |
| Packaging | Carton |
| Content amount | 10 ST |
| EAN | 4024941971324 |
| Length | 207 mm |
| Width | 162 mm |
| Height | 142 mm |
| Weight | 1.05 kg |
| Volume | 3,750 ccm |



4 MB 111

| Ampere | 16 | 16 | 16 | | | |
|----------------------------|------|------|------|--|--|--|
| Polzahl | 3 | 4 | 5 | | | |
| a | 68,0 | 87,0 | 87,0 | | | |
| b | 62,0 | 71,0 | 71,0 | | | |
| c | 47,0 | 70,0 | 70,0 | | | |
| d | 47,0 | 52,0 | 52,0 | | | |
| e Ø | 5,5 | 5,5 | 5,5 | | | |
| f | 8,0 | 5,5 | 5,5 | | | |
| h | 46,0 | 46,0 | 46,0 | | | |
| i | 50,0 | 54,0 | 54,0 | | | |
| k | - | 9,5 | 9,5 | | | |
| l | 56,0 | 65,0 | 72,0 | | | |
| m | 51,0 | 58,0 | 64,0 | | | |
| α | 20° | 20° | 20° | | | |
| Leiter mm ² min | 1,5 | 1,5 | 1,5 | | | |
| Leiter mm ² max | 4 | 4 | 4 | | | |