

wall mounting socket outlet - housing dimensions 126x83



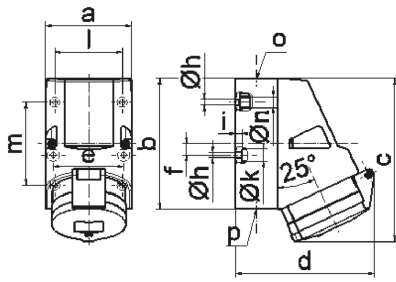
Product description	
BALS-Prd.-Nr	11977
EAN	4024941119771
product group	TE wall mounting socket outlet Quick-Connect
current	32A
number of poles	3p
Arrangement of the phases	2P+PE
position of earth contact	6 h
voltage (V)	200 up to 250V
frequency	50 and 60Hz

Product description	
protection degree	IP44
colour code	blue RAL 5015
Colour of appliance	Hinged lid blue, Housing bottom grey, Housing top grey, Collar grey
connection design	screwless spring/cage/kontex
maximum conductor size (LQ)	10,0 qmm
cable entry (KE)	1xM25 top, 2xM25 bottom
Height	156mm
Width	83mm
Depth	130mm
dimension of enclosure (GG)	126x83 mm (HxW)
material of enclosure	Polyamide
contact	The contact carrier is made of high temperature resistant material, the contacts are brass nickel plated

Additional technical information	
	The cable entry is one at top open and two at bottom closed
	Lower part of housing rotatable by 180°
	4 cut out fixing holes in the lower part of housing

Logistics data	
Weight/pcs	0.356 kg / Piece

Logistics data	
Packaging	Bag
Content amount	1 ST
EAN	4024941119771
Length	130 mm
Width	83 mm
Height	156 mm
Weight	0.357 kg
Volume	1,683.24 ccm
Packaging	Carton
Content amount	10 ST
EAN	4024941968447
Length	330 mm
Width	216 mm
Height	260 mm
Weight	3.786 kg
Volume	17,062.5 ccm



1 MB 2

Ampere	16	16	32	32	32
Polzahl	4	5	3	4	5
a	83,0	83,0	83,0	83,0	83,0
b	126,0	126,0	126,0	126,0	126,0
c	153,0	155,0	155,0	155,0	155,0
d	127,0	130,0	130,0	130,0	136,0
e	68,0	68,0	68,0	68,0	68,0
f	11,0	11,0	11,0	11,0	11,0
h ø	5,5	5,5	5,5	5,5	5,5
i	6,5	6,5	6,5	6,5	6,5
k ø	12,0	12,0	12,0	12,0	12,0
l	65,0	65,0	65,0	65,0	65,0
m	80,0	80,0	80,0	80,0	80,0
n ø	10,0	10,0	10,0	10,0	10,0
o	M25	M25	M25	M25	M25
p	2 x M25	2 x M25	2 x M25	2 x M25	2 x M25
Leiter mm ² min	1,5	1,5	2,5	2,5	2,5
Leiter mm ² max	4	4	10	10	10