

wall mounting socket outlet - housing dimensions 100x75



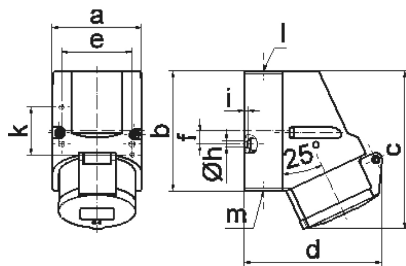
Product description	
BALS-Prd.-Nr	11906
EAN	4024941119061
product group	Wall mounting socket outlet Quick-Connect
current	16A
number of poles	5p
Arrangement of the phases	3p+N+PE
position of earth contact	6 h
voltage (V)	200/346 up to 240/415V
frequency	50 and 60Hz

Product description	
protection degree	IP44
colour code	red RAL 3000
Colour of appliance	Collar red, Hinged lid red, Housing bottom grey, Housing top grey
connection design	screwless spring/cage/kontex
maximum conductor size (LQ)	4,0 qmm
cable entry (KE)	top entry M20
Height	131mm
Width	75mm
Depth	116mm
dimension of enclosure (GG)	100x75 mm (HxW)
material of enclosure	Polyamide
contact	The contact carrier is made of polyamide, The contacts are brass

Additional technical information	
	The cable entry is one at top open and one at bottom and one rear side closed
	Lower part of housing rotatable by 180°

Logistics data	
Weight/pcs	0.272 kg / Piece
Packaging	Bag
Content amount	1 ST

Logistics data	
EAN	4024941119061
Length	116 mm
Width	75 mm
Height	131 mm
Weight	0.273 kg
Volume	1,139.7 ccm
Packaging	Carton
Content amount	10 ST
EAN	4024941957656
Length	387 mm
Width	222 mm
Height	150 mm
Weight	2.913 kg
Volume	11,029.5 ccm



1 MB 7

Ampere Polzahl	16 3	16 4	16 5			
a	64,0	75,0	75,0			
b	87,0	100,0	100,0			
c	117,0	129,0	131,0			
d	103,0	108,0	116,0			
e	51,0	59,0	59,0			
f	-	11,0	11,0			
h ø	4,1	5,1	5,1			
i	4,5	4,5	4,5			
k	40,0	-	-			
l	M20	M20	M20			
m	für M20	für M20	für M20			
Leiter mm ² min	1,5	1,5	1,5			
Leiter mm ² max	4	4	4			