

wall mounting socket outlet - housing dimensions 126x83



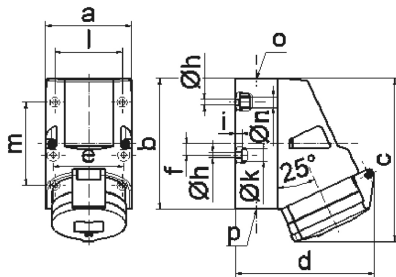
Product description	
BALS-Prd.-Nr	11849
EAN	4024941118491
product group	Wall mounting socket outlet
current	16A
number of poles	4p
Arrangement of the phases	3P+PE
position of earth contact	4 h
voltage (V)	100 up to 130V
frequency	50 and 60Hz

Product description	
protection degree	IP44
colour code	yellow RAL 1012
Colour of appliance	Hinged lid yellow, Housing bottom grey, Housing top grey, Collar grey
connection design	with screw terminal
maximum conductor size (LQ)	4,0 qmm
cable entry (KE)	1xM25 top, 2xM25 bottom
Height	153mm
Width	83mm
Depth	127mm
dimension of enclosure (GG)	126x83 mm (HxW)
material of enclosure	Polyamide
contact	The contact carrier is made of polyamide, The contacts are brass

Additional technical information	
	The cable entry is one at top open and two at bottom closed
	Lower part of housing rotatable by 180°
	4 cut out fixing holes in the lower part of housing

Logistics data	
Weight/pcs	0.34 kg / Piece
Packaging	Bag

Logistics data	
Content amount	1 ST
EAN	4024941118491
Length	127 mm
Width	83 mm
Height	153 mm
Weight	0.341 kg
Volume	1,612.773 ccm
Packaging	Carton
Content amount	10 ST
EAN	4024941840781
Length	330 mm
Width	216 mm
Height	260 mm
Weight	3.626 kg
Volume	17,062.5 ccm



1 MB 2

Ampere Polzahl	16 4	16 5	32 3	32 4	32 5
a	83,0	83,0	83,0	83,0	83,0
b	126,0	126,0	126,0	126,0	126,0
c	153,0	155,0	155,0	155,0	155,0
d	127,0	130,0	130,0	130,0	136,0
e	68,0	68,0	68,0	68,0	68,0
f	11,0	11,0	11,0	11,0	11,0
h ø	5,5	5,5	5,5	5,5	5,5
i	6,5	6,5	6,5	6,5	6,5
k ø	12,0	12,0	12,0	12,0	12,0
l	65,0	65,0	65,0	65,0	65,0
m	80,0	80,0	80,0	80,0	80,0
n ø	10,0	10,0	10,0	10,0	10,0
o	M25	M25	M25	M25	M25
p	2 x M25	2 x M25	2 x M25	2 x M25	2 x M25
Leiter mm ² min	1,5	1,5	2,5	2,5	2,5
Leiter mm ² max	4	4	10	10	10