

# wall mounting socket outlet - 7 poles, housing dimensions 126x83



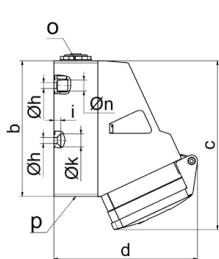
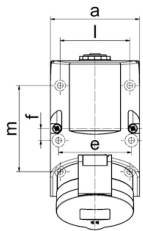
Product description	
BALS-Prd.-Nr	11483
EAN	4024941114837
product category (PG)	Wall mounting socket outlet
current (A)	32A
number of poles (P99)	7p
number of poles (P)	6p+PE
position of earth contact (H)	6 h
Voltage	400V

Product description	
frequency (HZ)	50 and 60Hz
protection degree (SA)	IP44
colour code 1 (KF1)	red RAL 3000
Colour of appliance	Hinged lid red, Housing bottom grey, Housing top grey, Collar grey
connection design (AT)	with screw terminal
maximum conductor size (LQ)	10,0 qmm
cable entry (KE)	1xM25 top, 2xM25 bottom
Height	157mm
Width	83mm
Depth	136mm
dimension of enclosure (GG)	126x83 mm (HxW)
material of enclosure (GM)	Polyamide
contact	The contact carrier is made of high temperature resistant material, The contacts are brass

Additional technical information	
	The cable entry is one at top open and two at bottom closed
	Lower part of housing rotatable by 180°
	4 cut out fixing holes in the lower part of housing

Logistics data	
Weight/pcs	0.454 kg / Piece

Logistics data	
Packaging	Bag
Content amount	1 ST
EAN	4024941114837
Length	136 mm
Width	83 mm
Height	157 mm
Weight	0.455 kg
Volume	1,772.216 ccm
Packaging	Carton
Content amount	10 ST
EAN	4024941946346
Length	330 mm
Width	216 mm
Height	260 mm
Weight	4.766 kg
Volume	17,062.5 ccm



1 MB 124

Ampere	16	32					
Polzahl	7	7					
a	83,0	83,0					
b	126,0	126,0					
c	155,0	155,0					
d	130,0	136,0					
e	68,0	68,0					
f	11,0	11,0					
h ø	5,5	5,5					
i	6,5	6,5					
k ø	12,0	12,0					
l	65,0	65,0					
m	80,0	80,0					
n ø	10,0	10,0					
o	M25	M25					
p	2 x M25	2 x M25					
Leiter mm <sup>2</sup> min	1,5	2,2					
Leiter mm <sup>2</sup> max	4	10					