

## wall mounting socket outlet - housing dimensions 126x83



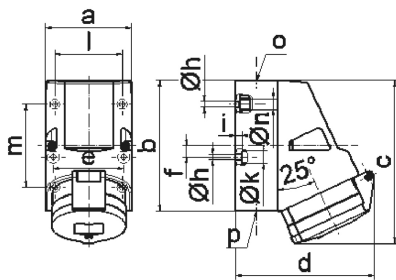
Product description	
BALS-Prd.-Nr	1123
EAN	4024941011235
product group	Wall mounting socket outlet
current	32A
number of poles	5p
Arrangement of the phases	3p+N+PE
position of earth contact	9 h
voltage (V)	120/208 up to 144/250V
frequency	50 and 60Hz

Product description	
protection degree	IP44
colour code	blue RAL 5015
Colour of appliance	Hinged lid blue, Housing bottom grey, Housing top grey, Collar grey
connection design	with screw terminal
maximum conductor size (LQ)	10,0 qmm
cable entry (KE)	1xM25 top, 2xM25 bottom
Height	157mm
Width	83mm
Depth	136mm
dimension of enclosure (GG)	126x83 mm (HxW)
material of enclosure	Polyamide
contact	The contact carrier is made of polyamide, The contacts are brass

Additional technical information	
	The cable entry is one at top open and two at bottom closed
	Lower part of housing rotatable by 180°
	4 cut out fixing holes in the lower part of housing

Logistics data	
Weight/pcs	0.389 kg / Piece
Packaging	Carton

Logistics data	
Content amount	10 ST
EAN	4024941840859
Length	330 mm
Width	216 mm
Height	260 mm
Weight	4.116 kg
Volume	17,062.5 ccm



1 MB 2

Ampere	16	16	32	32	32
Polzahl	4	5	3	4	5
a	83,0	83,0	83,0	83,0	83,0
b	126,0	126,0	126,0	126,0	126,0
c	153,0	155,0	155,0	155,0	155,0
d	127,0	130,0	130,0	130,0	136,0
e	68,0	68,0	68,0	68,0	68,0
f	11,0	11,0	11,0	11,0	11,0
h ø	5,5	5,5	5,5	5,5	5,5
i	6,5	6,5	6,5	6,5	6,5
k ø	12,0	12,0	12,0	12,0	12,0
l	65,0	65,0	65,0	65,0	65,0
m	80,0	80,0	80,0	80,0	80,0
n ø	10,0	10,0	10,0	10,0	10,0
o	M25	M25	M25	M25	M25
p	2 x M25	2 x M25	2 x M25	2 x M25	2 x M25
Leiter mm <sup>2</sup> min	1,5	1,5	2,5	2,5	2,5
Leiter mm <sup>2</sup> max	4	4	10	10	10